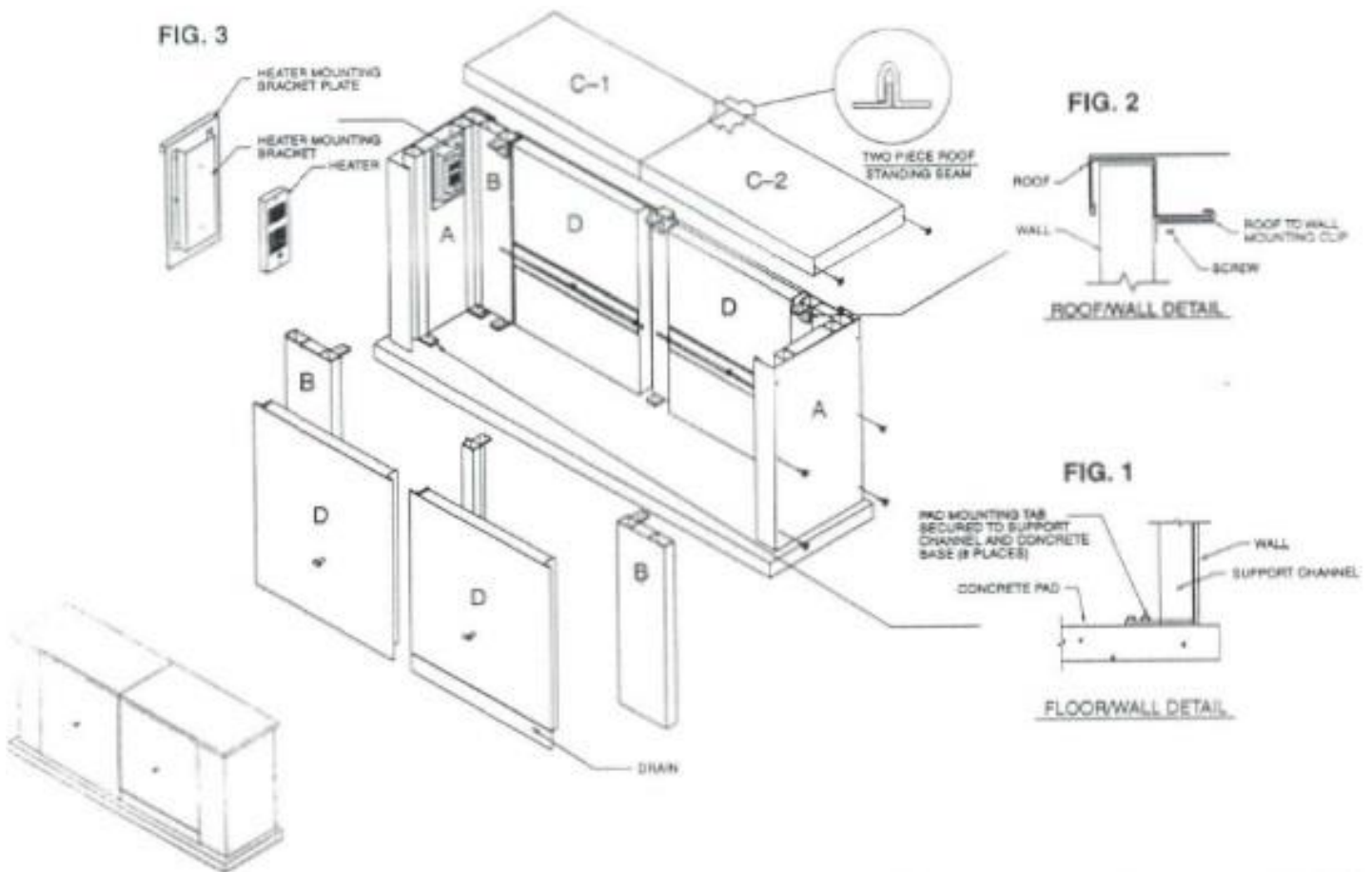


AquaSHIELD®

PROTECTIVE ENCLOSURES

INSTALLATION INSTRUCTIONS SERIES: BFP10



ENCLOSURE ASSEMBLY INSTRUCTIONS

1. Provide a concrete mounting pad according to the “Mounting Pad Preparation” sheet. Using the BFP as centerline, mark the outside dimensions of the enclosure on the concrete pad.
2. Assemble end wall panel (A) and side wall panels (B) by sliding side walls into end wall and secure with self-tapping screws through holes provided in (A) panel. **Note: Pad mounting tabs on panels must be down for securing to pad.** Repeat with remaining (A) & (B) panels. Set assembled sections on marked pad centered around BFP device.
3. Set roof panel (C1) & (C2) on assembled wall sections as shown. Fasten with screws through holes provided in the end of roof panels as shown. Temporarily set the center post in place to support the roof. Secure the roof together on the inside at the joint through the holes provided in the roof joint plate.
4. **To insure proper fit of access panels, verify that the door openings have the same dimensions across the top and bottom and the walls are plumb.** Secure enclosure to pad with masonry anchors provided. (FIG.1)
5. Attach “roof to wall mounting clips” to roof and screw to support channels on side walls at access openings and center post. (FIG.2)

6. If heater is provided, attach heater to “**heater mounting bracket**” located on end wall panel by using self-tapping screws through back of heater box. (FIG.3) **Note: Provide ground GFI receptacle and Follow all governing electrical codes and regulations.**
7. Set access doors in place and lock.
8. Remove the protective plastic film from the enclosure. **Note: Failure to remove plastic from panels will cause damaged to the exterior finish of the enclosure.**